

Viscosity VPN Client Setup for Windows (MBI)

Viscosity is OpenVPN client software that allows you to access MBI network from outside MBI office.

Step 1. Two install options.

A. Install while connected to the MBI network.

Mount the MBI storage and go to the \sys\apps\MS-Windows\Viscosity folder. ...

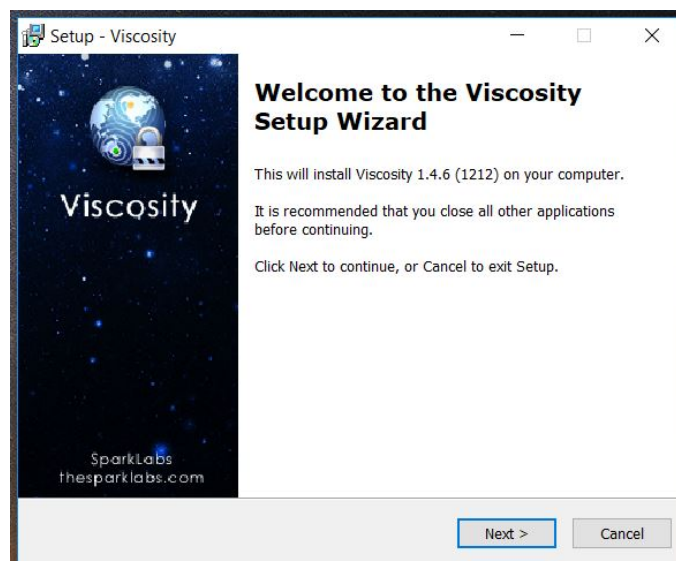
Copy the Viscosity installation connection file: **MBI-VPN.visz** to your Desktop or Documents folder.

B. Install from external network.

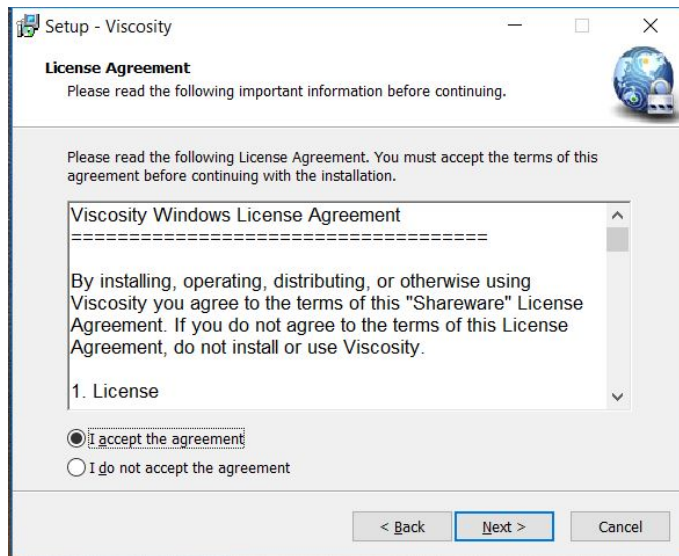
Download the app from the Viscosity web site: <https://www.sparklabs.com/viscosity/download/>

Note : Send email to ITcore requesting the Viscosity connection file (if needed) and registration info.

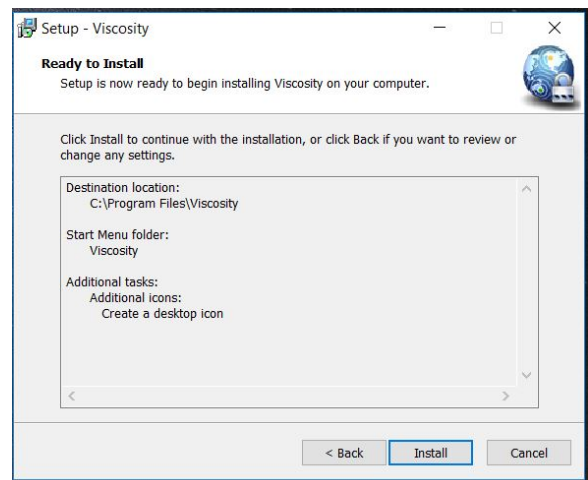
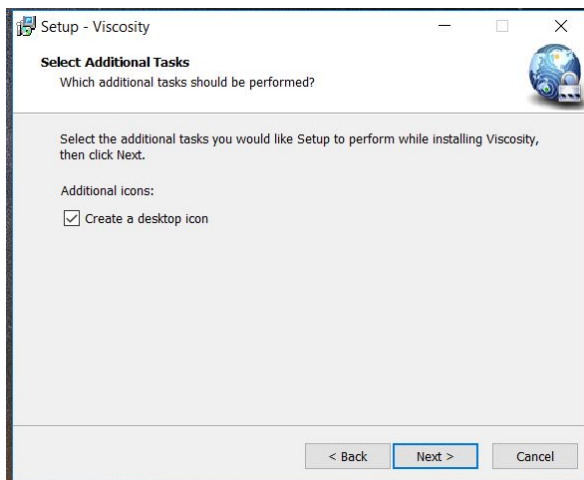
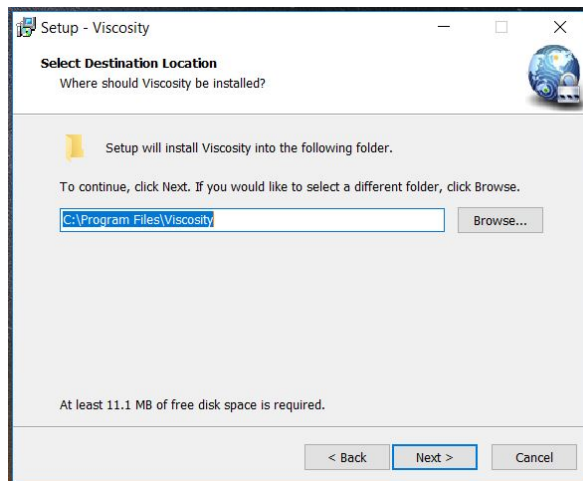
Step 2. Double click “Viscosity Installer.exe” to Install the Software.



Step 3. Accept the agreement and click next to install



Step 4. Choose folder location to install then click next and check additional icons.



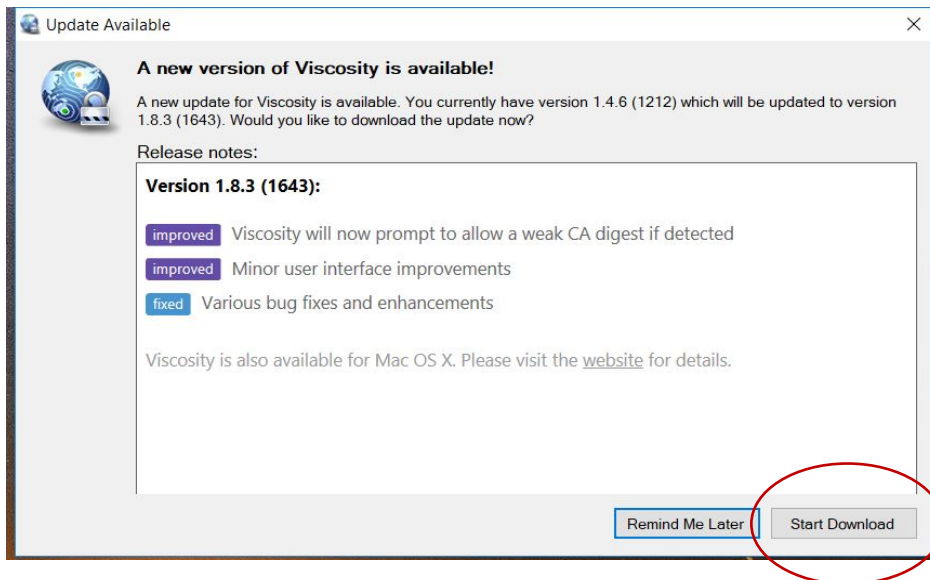
Note: Check the box, Always trust software from "Sparklabs" and Install

Step 5. Completing the viscosity Setup Wizard and Launch Viscosity application.

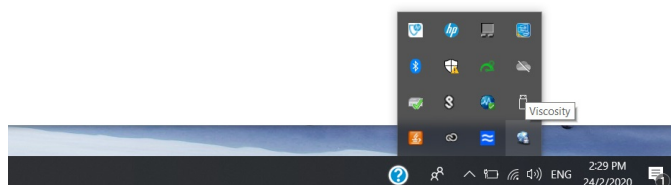


Step 6. A new Version of Viscosity notification.

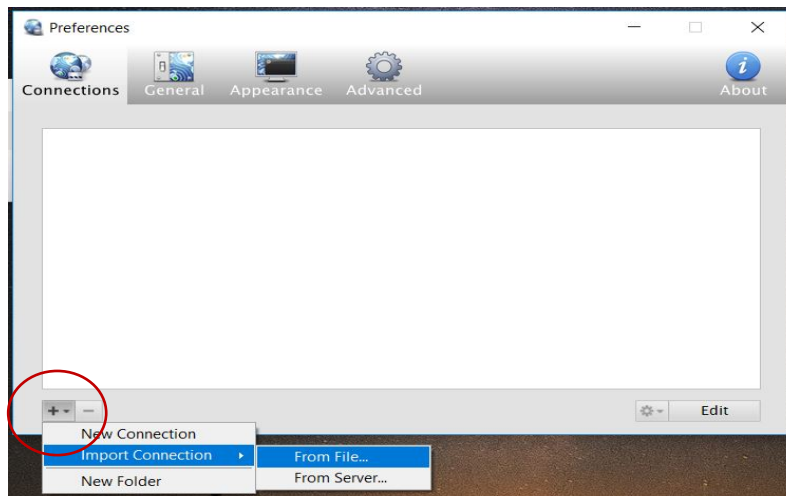
Click "Start Download & Install Update" to install the latest update



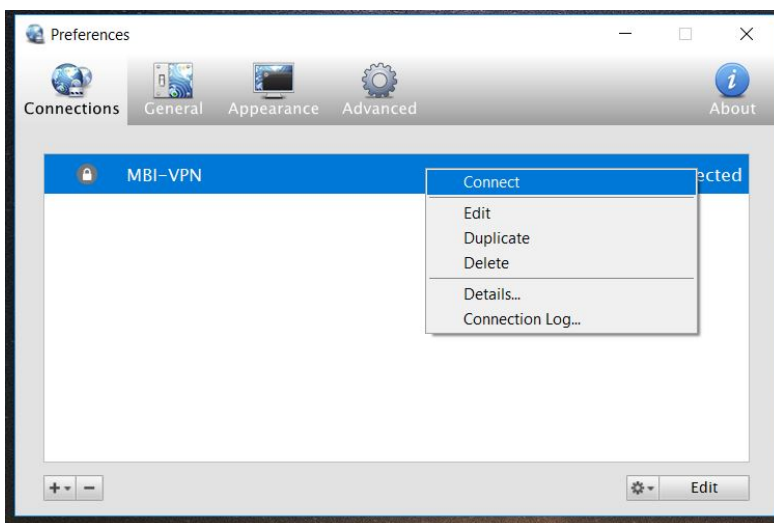
Step 7. Right click icon software from the taskbar to configure the Preferences .



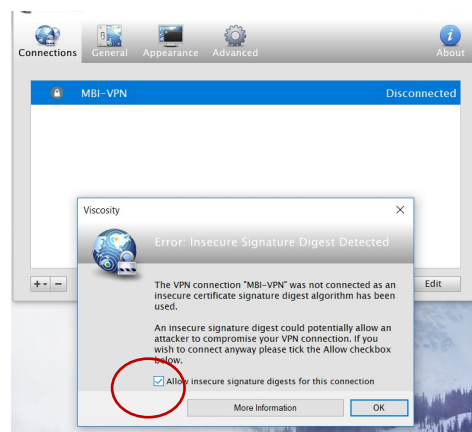
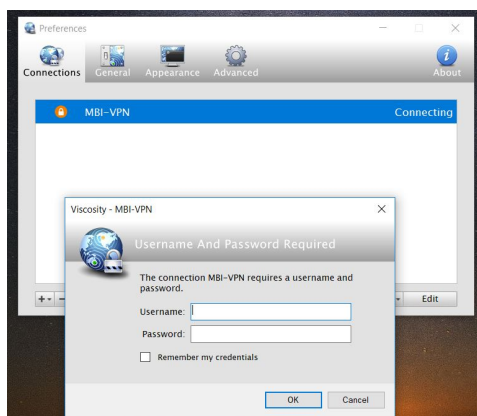
Step 8. Click the + icon to import the Viscosity connection file: MBI-VPN.visz that you saved in Step 1.



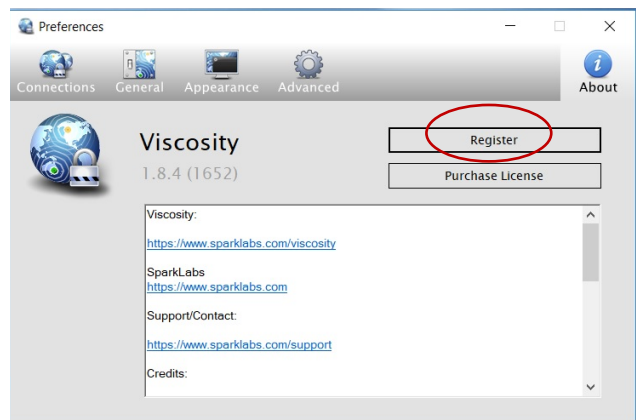
Step 9. Right click and connect MBI-VPN Viscosity



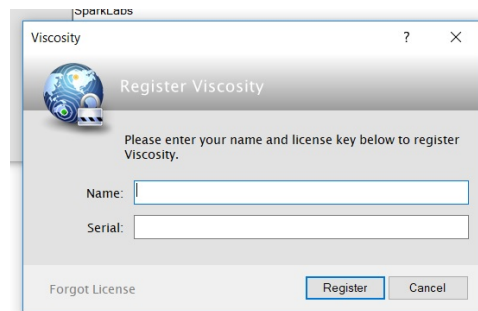
Step 10. Use MBI account to login. Check to Allow insecure signature digests for this connection, Click ok and re-type MBI user account



Step 11. Please register your VPN thru preference and click About..



Step 12. You will be prompted Name and Serial to fill-in.
Key in the name and serial key provided by MBI IT Core.



Note : Send email to ITcore requesting the Viscosity connection file (if needed) and registration info.

To verify the connection right click MBI-VPI and choose details to display connectivity.

