

# MBI-Japan Joint Symposium on Mechanobiology of Development and Multicellular Dynamics

2 - 4 December 2014

Mechanobiology Institute, Singapore (MBI), Lecture Theatre 1,  
National University of Singapore (NUS)

## TOPICS

- Morphogenesis / Collective cell behavior
- Mechanosensing / Mechanoresponses
- Tissue mechanics
- Cell polarity / Cell division / Cell fate decision
- Patterning

## SCIENTIFIC COMMITTEE

Naoto Ueno (NIBB, Japan)  
Hiroyuki Takeda (Univ. Tokyo, Japan)  
Masahiro Sokabe (Nagoya Univ., Japan / MBI)  
Fumio Motegi (MBI)  
Timothy Saunders (MBI)  
Yusuke Toyama (MBI)  
Ronen Zaidel-bar (MBI)

## SPEAKERS

### JAPAN

Yasuhiro Inoue  
Shuji Ishihara  
Shigeru Kondo  
Erina Kuranaga  
Takeo Matsumoto  
Kenji Matsuno  
Isao Matsuo  
Toshihiko Ogura  
Shizue Ohsawa  
Satoshi Sawai  
Hideru Togashi  
Masakazu Yamazaki

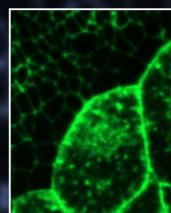
### SINGAPORE

Chwee Teck Lim  
Paul Matsudaira  
Antonia Monteiro  
Fumio Motegi  
Timothy Saunders  
Masahiro Sokabe  
Yusuke Toyama  
Min Wu  
Ronen Zaidel-Bar

### INTERNATIONAL

Yanlan Mao  
Ann Miller  
Naomi Nakayama  
Maithreyi Narasimha  
Nadine Peyri  ras  
Sarah Woolner

## ABOUT THE CONFERENCE



During the development of multicellular organisms, cells undergo proliferation, shape change, and migration, which are the basis of tissue morphogenesis.

Elucidating the forces that form and reshape multicellular structures and elicit a myriad of physiological responses is essential for understanding development. However, only recently the molecular and cellular mechanisms that control the physical properties of cells and tissues, and their environments, have begun to be investigated. This symposium aims to bring together experts from different fields to pursue an integral and mechanical view of development.

This symposium is supported by MBI and Grant-in-Aid for Scientific Research on Innovative Areas, Ministry of Education, Culture, Sport, Science and Technology, Japan - "From molecules and cells to organs: trans-hierarchical logic for higher-order pattern and structures".