

20-21 MAY 2017 | SINGAPORE

MECHANOBIOLOGY INSTITUTE, NATIONAL UNIVERSITY OF SINGAPORE
NUS CENTRE FOR BIOIMAGING SCIENCES
BIOIMAGING SOCIETY OF JAPAN

JOINT SYMPOSIUM ON BIOIMAGING BETWEEN SINGAPORE AND JAPAN

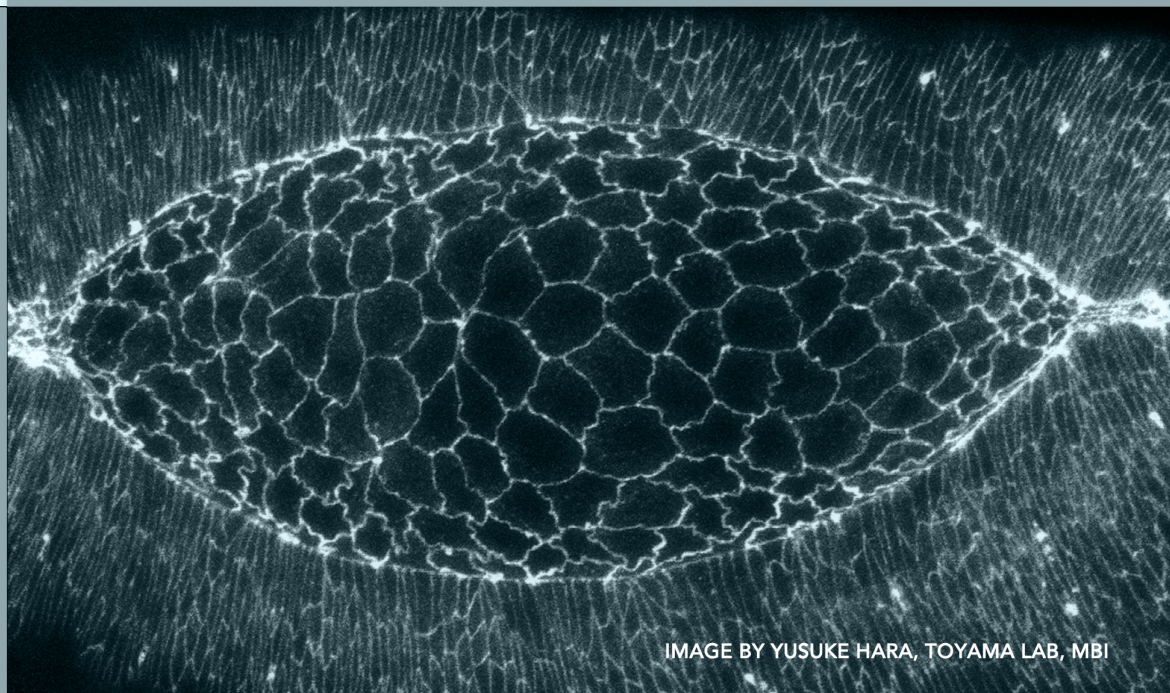


IMAGE BY YUSUKE HARA, TOYAMA LAB, MBI

Joint Symposium on Bioimaging between Singapore & Japan

National University of Singapore

May 20-21, Singapore

Saturday, May 20, 2017

Venue: University Hall Auditorium, 2nd Storey, Lee Kong Chian Wing

Time	Speaker
0830-0900am	Registration University Hall Auditorium
0900-0910am	Opening remarks Paul MATSUDAIRA Centre for Bioimaging Sciences & Department of Biological Sciences, National University of Singapore
Symposium 1	
0910-0935am	Min WU National University of Singapore <i>Information Content of Intracellular Patterns</i>
0935-1000am	Lu GAN Centre for Bioimaging Sciences & Department of Biological Sciences, National University of Singapore <i>Exploration of Eukaryotic Nuclei at Molecular Resolution</i>
1000-1025am	Pakorn (Tony) KANCHANAWONG Department of Biomedical Engineering & Mechanobiology Institute, National University of Singapore <i>Nanoscale Architecture of Cadherin-based Cell Adhesions</i>
1025-1050am	Yusuke TOYAMA Mechanobiology Institute, Department of Biological Sciences, National University of Singapore & Temasek Lifesciences Laboratory, Singapore <i>Tension-Dependent Vinculin Dynamics at Adherens Junction During Cell Boundary Oscillation</i>
1050-1120am	Coffee Break
1120-1220am	Plenary Lecture 1 Shin'ichi ISHIWATA Department of Physics, Faculty of Science & Engineering, Waseda University, Tokyo, Japan <i>Bio-motile Functions Studied by Microscopic Imaging of Physical Parameters</i>
1220-0200pm	Lunch at University Hall, CBIS visit (starting at 13.10)
WOMEN IN SCIENCE SYMPOSIUM	
Organizers: Linda J Kenney & Naoko Iida -Tanaka, Kahoko Hashimoto	
0200-0205pm	Opening Address: Organizer, Japan Naoko Iida-TANAKA , Otsuma Women's University, Japan Kahoko HASHIMOTO , Chiba Institute of Technology, Japan
0205-0230pm	Reina IKAGA Department of Nutritional Science, National Institute of Health and Nutrition, Japan <i>The Role of Aquaporin-8 on Mitochondria</i>
0230-0255pm	Tomoko MASAIKE Department of Applied Biological Science, Faculty of Science & Technology, Tokyo University of Science, Japan

	<i>Imaging Movements and Reactions of Biomolecules</i>
0255-0320pm	Linda J KENNEY Mechanobiology Institute, National University of Singapore <i>Super-resolution Imaging of Salmonella Virulence Regulation and Secretion</i>
0320-0345pm	Carol TANG National Neuroscience Institute, Duke-NUS Medical School, National Cancer Centre, Singapore <i>Targeting Brain Tumors: Improving Lives through Precision Medicine</i>
0345-0350pm	Closing Remarks: Organizer, Singapore Linda J KENNEY Mechanobiology Institute, National University of Singapore
0350-0400pm	Presentation by Sponsor - JEOL Ltd.
0400-0600pm	Coffee break & Poster presentations
0630-0830pm	Dinner at Kent Ridge Guild House

Sunday, May 21, 2017

Venue: Mechanobiology Institute, Level 5, T-Lab, NUS

Time	Speaker
Symposium 2: Organizer: Takeharu NAGAI	
0900-0925am	Hiroki R UEDA Systems Pharmacology, Graduate School of Medicine, University of Tokyo, Laboratory of Synthetic Biology, Quantitative Biology Centre, RIKEN, Japan <i>Whole-body and Whole-organ Clearing and Imaging with Single-cell Resolution Toward Organism-Level Systems Biology in Mammals</i>
0925-0950am	Satoshi NISHIMURA Center for Molecular Medicine, Jichi Medical University, Tochigi, Japan <i>Minor Changes but Major Future Impacts, can be Revealed by Extensive and High-Through-Put In Vivo Visualization Using 4K/8K CMOS Sensors</i>
0950-1015am	Katsumasa FUJITA Department of Applied Physics, Osaka University, Japan <i>Raman Microscopy for Molecular Imaging of Living Cells</i>
1015-1040am	Takeharu NAGAI The Institute of Scientific and Industrial Research, Osaka University, Japan <i>Development of Techniques for Imaging Physiological Functions Toward Visualization of Minority Cells</i>
1040-1110am	Coffee Break
1110-1210am	Plenary Lecture 2 Michael SHEETZ Mechanobiology Institute, National University of Singapore <i>Integrin Clusters: A Robust Way to Organize Adhesions for Cell Mechanics</i>
1210-1220pm	Closing Remarks Kazuo SUZUKI Asia International Institute of Infectious Diseases Control, Teikyo University Department of Immunology, National Institute of Infectious Diseases, Japan
1220-0200pm	Lunch at MBI, Level 10; MBI visit starting at 0100 pm